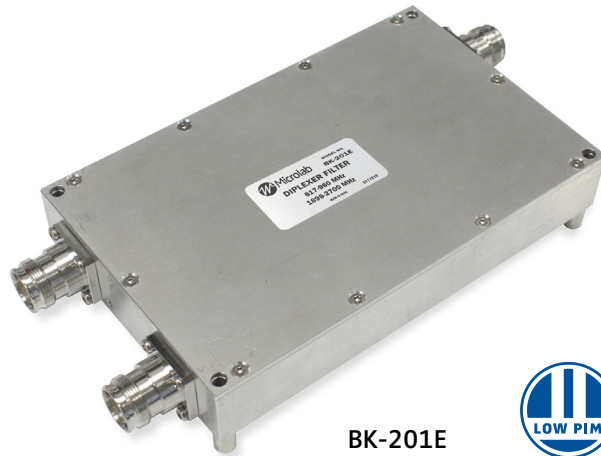


### \$ Saver Product Line

- ◆ Integrates Commercial Wireless Bands
- ◆ 50 dB Input Isolation
- ◆ 250 W/port Avg. Power
- ◆ Guaranteed Low PIM
- ◆ IP67 Rated
- ◆ Minimal RF Insertion Loss
- ◆ Rugged, High Reliability
- ◆ RoHS compliant
- ◆ N-type and 4.3-10 Connectors



BK-201E



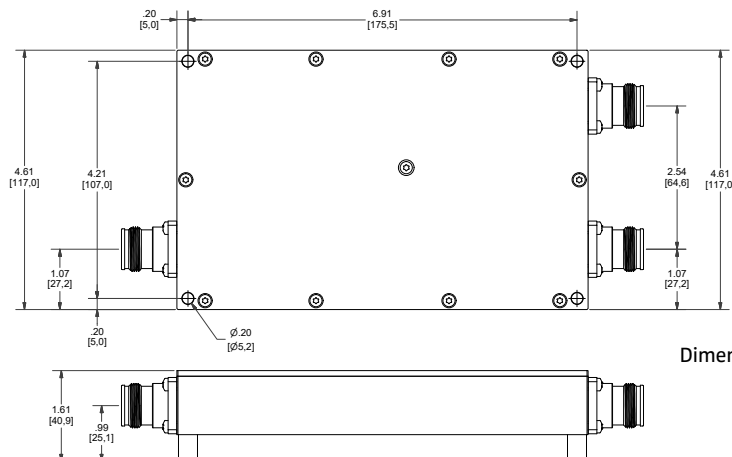
Microlab Model BK-201 series is a Diplexer which allows combination and separation of the signals in 617 - 960 MHz and the 1695 - 2700 wireless bands. To minimize band inter-reaction, the inputs are well isolated and have minimal insertion loss over their respective frequency bands. Attention to mechanical design ensures guaranteed low passive intermodulation.

The Diplexer has been designed using passive, proprietary techniques which minimizes cost and size. At the same time it ensures minimal loss and very high reliability at input powers up to 250W per input.

Model Numbers Indoor	Connectors (female)	Wt. nom. lb (kg)
<b>BK-201E</b>	4.3-10	2.8 (1.2)
<b>BK-201N</b>	N	2.8 (1.2)

Frequency Bands:  
 Port 1 - Port 3: 617 to 960 MHz  
 Port 2 - Port 3: 1,695 to 2,700 MHz  
 P1:P2 Isolation: >50 dB in band  
 VSWR, all ports: 1.25:1 max.  
 DC Pass: All ports, 1A max.  
 Group Delay: 3 ns max.  
 Passband Loss: <0.15 dB (575 - 960 MHz)  
 <0.25 dB (1695 - 2700 MHz)  
 Input Power Rating: 250W/input avg., 3 kW peak  
 Impedance: 50Ω nominal  
 Intermod. (PIM): -161 dBc (-118 dBm)  
 with 2 x +43dBm (20W) tones  
 Environment: -35 to +55°C, IP67  
 Dimensions: 236 x 109 x 28 mm  
 Finish: Connectors: Triplate  
 Housing: Passivated Al.

### Outline Diagram



Dimensions in inches [mm]

Note: Specifications are subject to change without prior notification.

19SEP2018