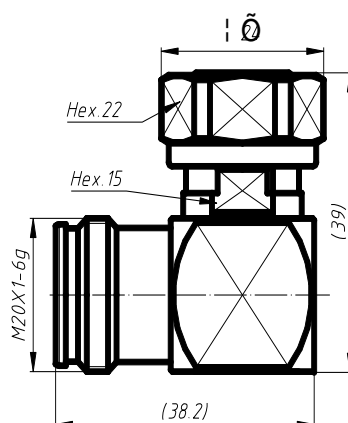


TECHNICAL SPECIFICATION

4310MA-4310F 01



4.3-10 type right angle male to 4.3-10
Straight female

ID: 2.4.81.8382.1

Rev: A0

Material and Plating

Center contact		
	Male	Brass / Silver Plated
	Female	Tin Bronze / Silver Plated
Outer contact & Body		Brass / Trimetal Plated
Nut		Brass / Nickel Plated
Dielectric		PTFE
Gasket		Silicon Rubber

Electrical Specifications

Characteristics Impedance		50 Ohm
Frequency Range		DC~6.0GHz
Insulation Resistance		≥10000MΩ
Dielectric Withstanding Voltage		2500V rms
Operating Voltage		1400V rms
Contact resistance		4.3-10 type
	Center contact resistance	≤1.5mΩ
	Outer contact resistance	≤1.5mΩ
Insertion Loss	@DC-3 GHz	≤0.10dB
VSWR	@DC-3 GHz	≤1.10
PIM3(2*43dBm)		≤-160dBc

Environmental & Mechanical Specifications

Durability (matings)	≥500 cycles
Mechanical Shock Test Method	MIL-STD-202, Method 213, Test Condition D
Vibration Test Method	MIL-STD-202, Meth. 204, Cond. A
Temperature Range	-65°C to +165°C
RoHS	Compliant

Regulatory Compliance / Certification

ISO 9001:2015	Compliant
---------------	-----------

The facts and figures contained herein are carefully complied to the best of our knowledge, but they are intended for general informational purposes only.