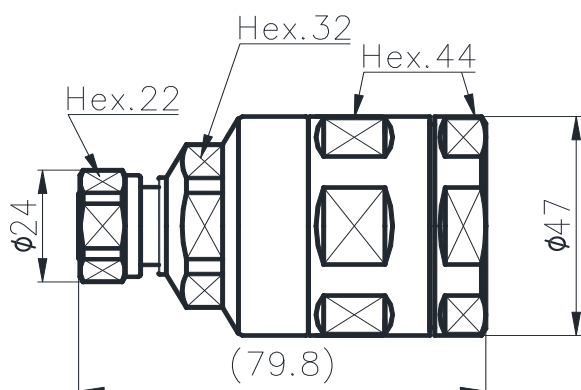
	TECHNICAL SPECIFICATION	
	4310M-1-1/4"L 01L	



4310 Straight male Connector for
1-1/4 Flexible RF Cable

ID:2.4.21.81.01

Rev: A0

Material and Plating

Inner Conductor Pin	Brass / Silver Plating
Inner Conductor Socket	Tin Bronze / Silver Plating
Insulator	TPX
Body & Outer Conductor	Brass / Trimetal Plating
Gasket	Silicon Rubber
Nut	Brass/Trimetal Plating

Electrical Specifications

Characteristics Impedance	50 Ohm
Frequency Range	DC~2.7GHz
Insulation Resistance	$\geq 5000\text{M}\Omega$
Dielectric Withstanding Voltage	2500V rms
Operating Voltage	1400V rms
Center contact resistance	$\leq 1.5\text{ m}\Omega$
Outer contact resistance	$\leq 1.5\text{ m}\Omega$
Insertion Loss	@DC-2.7 GHz $\leq 0.10\text{dB}$
VSWR	@0.8-1.0 GHz ≤ 1.10
	@1.7-2.7 GHz ≤ 1.13
PIM3(2*43dBm)	$\leq -155\text{dBc}$

Environmental & Mechanical Specifications

Durability (matings)	≥ 500 cycles
Mechanical Shock Test Method	MIL-STD-202, Method 213, Test Condition D
Vibration Test Method	MIL-STD-202, Meth. 204, Cond. A
Temperature Range	-65°C to +85°C
RoHS	Compliant
Sealing Class	IP68 24hr, 1m, 20°C

Regulatory Compliance / Certification

ISO 9001:2015	Compliant
---------------	-----------

The facts and figures contained herein are carefully complied to the best of our knowledge, but they are intended for general informational purposes only.